

EDGETAPE

FOR BENCHTOPS



180 **fx**

ARtouch®

AR **PLUS**®

Laminex™



ABS EDGETAPE

NEW



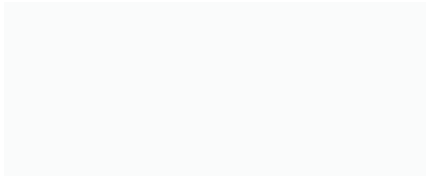
ACRYLIC EDGETAPE



Colour matched ABS edgetape is available in selected Formica and Laminex laminate colours, creating clean uninterrupted lines for a seamless look.

With a 1mm thickness the ABS edgetape blends in to the benchtop keeping the aesthetic minimal. A great option for square edge finishing without the dark line sometimes associated with laminate.

Laminex® ABS Edgetape (53mm x 1mm)



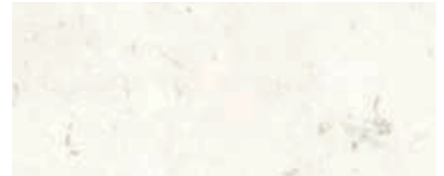
Polar White

N



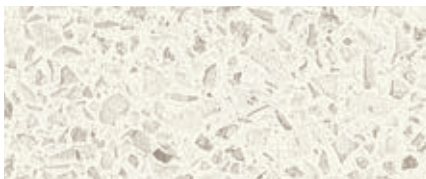
White Valencia

N



White Valencia

DG



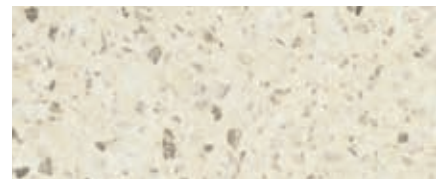
Pure Mineralstone

N



Pure Mineralstone

DG



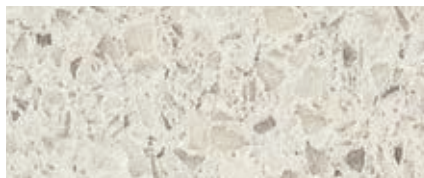
Sand Pebble

N



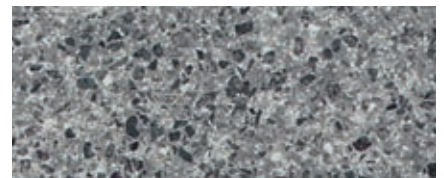
Kashmir Granite

N



Topaz Cluster

N



River Pebble

N



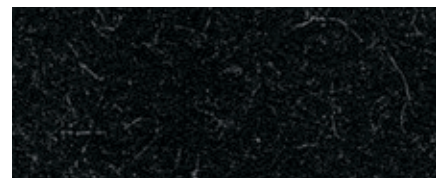
Vulcan Stone

N



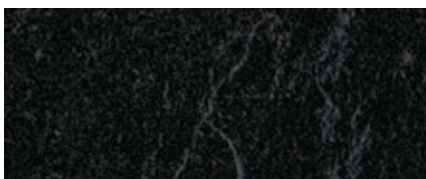
Vulcan Stone

DG



Starlight

N



Ebony Marble

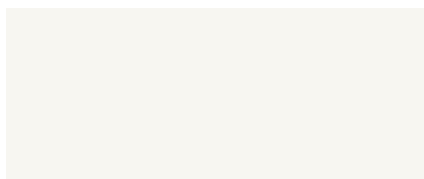
N

Formica® AR Plus® ABS Edgetape (45mm x 1.3mm)



Crystal White

G



Alpino

G



Folkestone

G



Storm

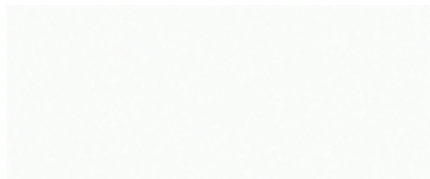
G



Diamond Black

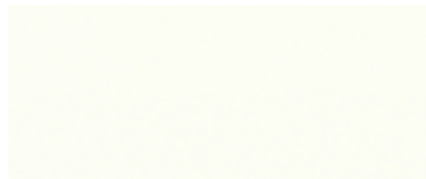
G

Formica® ABS Edgetape (53mm x 1mm)



Snowdrift

V



Warm White

V



White Kashmir

E



Pure Marble

V



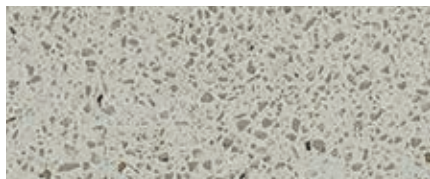
Pure Marble

GP



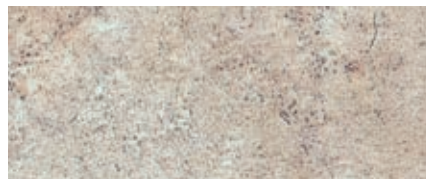
White Finestone

V



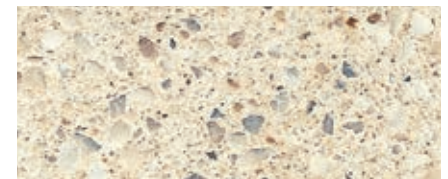
Grey Finestone

V



Concrete Stone

V



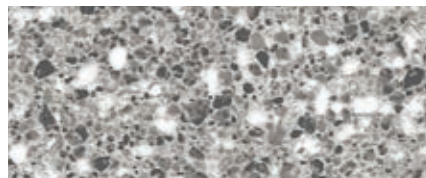
Amaretto Stone

V



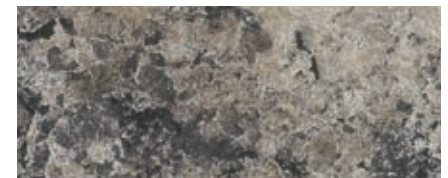
Elemental Concrete

V



Flint Crystal

V



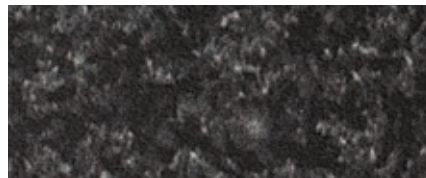
Perlato Granite

E



Metropolitan Concrete

V



Blackstone

V



Pietro Nero

V



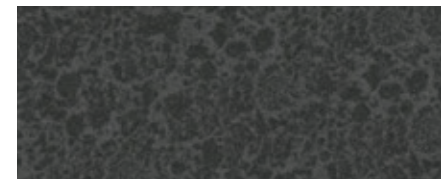
Flinders Black

V



Flinders Black

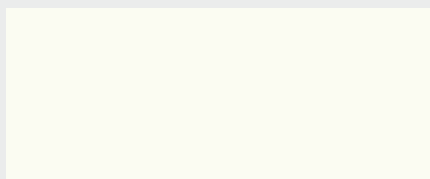
GP



Ebony Oxide

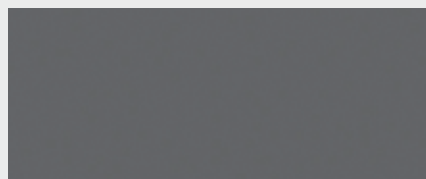
V

Formica® ARTouch® ABS Edgetape (42mm x 1mm)



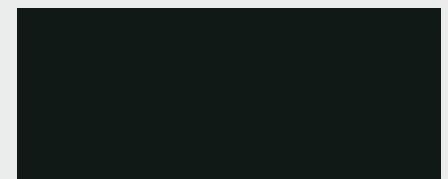
Warm White

SM



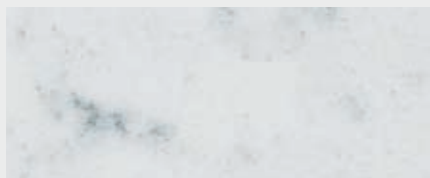
Storm

SM



Black

SM



Neo Cloud

SM



Neo Tornado

SM



Neo Cyclone

SM

Finishes: V Velour E Etchings GP GlossPlus SM Supermatte

ACRYLIC EDGETAPE

Acrylic edgetape offers a premium finish for your benchtop and is available to match Formica 180fx and Laminex DiamondGloss laminate stone decors.

The décor is printed on the back of the edgetape, protecting the décor and colour on the edge from damage. Additionally acrylic edgetape can be polished to a higher gloss level allowing you to get the perfect look for your kitchen benchtop.

All acrylic edgetape is 43mm width x 2mm thick. Formica 180fx Carrera Marble Gloss and Laminex Pure Mineralstone DiamondGloss are also available in 63mm width x 2mm thick.

Formica 180fx Acrylic Edgetape



Carrera Marble

G



Carrera Marble

M



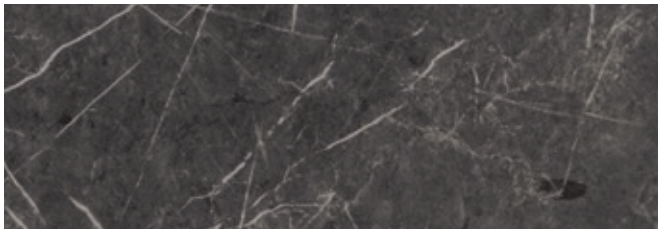
Bianca Luna

G



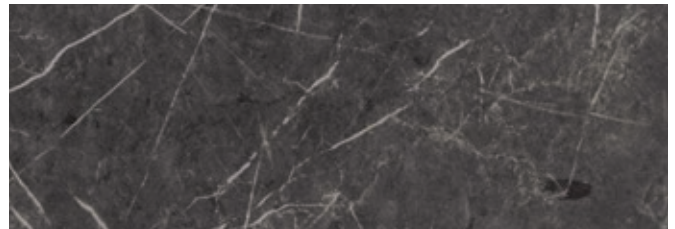
Bianca Luna

M



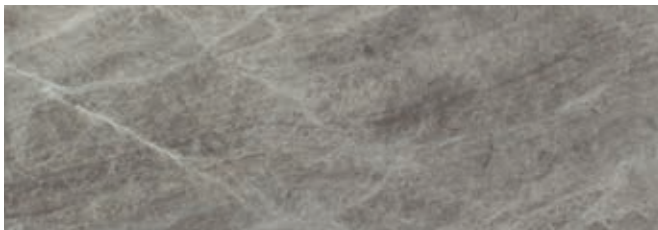
Ferro Graphite

G



Ferro Graphite

M



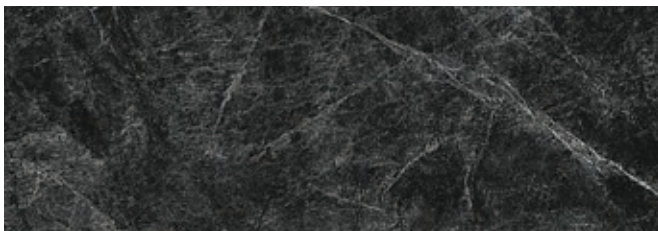
Soapstone Sequoia

G



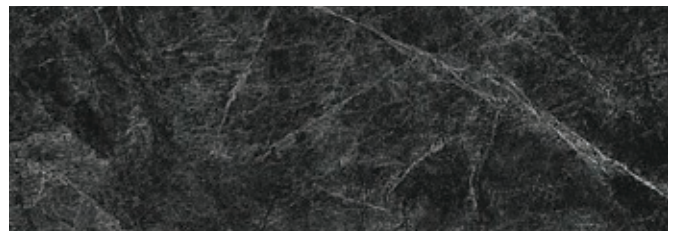
Weathered Cement

M



Jet Sequoia

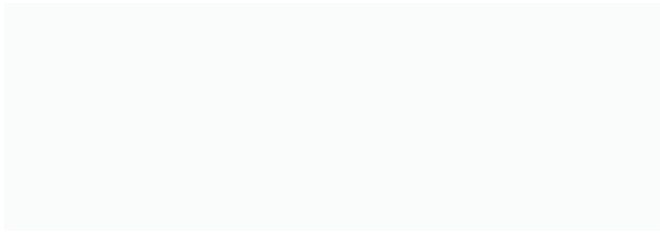
G



Jet Sequoia

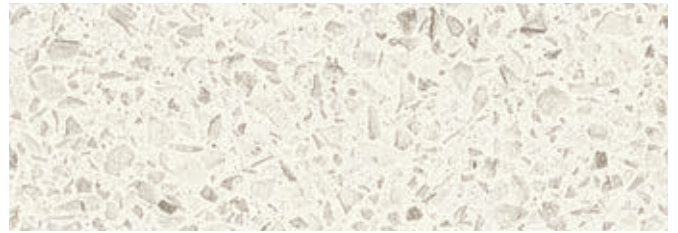
M

Laminex DiamondGloss Acrylic Edgetape



Polar White

DG



Pure Mineralstone

DG



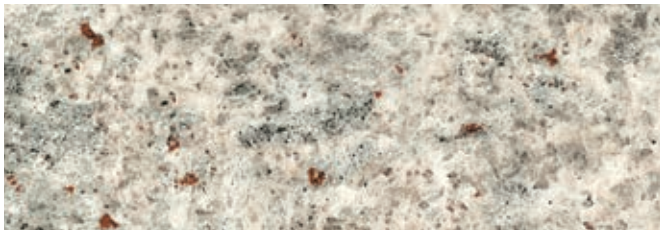
White Valencia

DG



Catalana Marble

DG



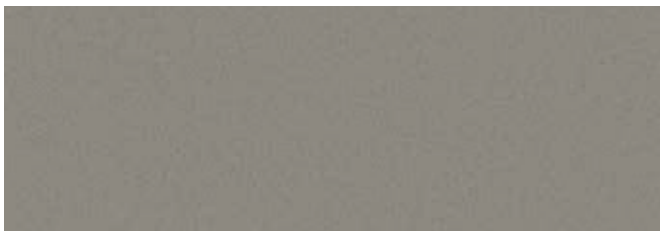
Kashmir Granite

DG



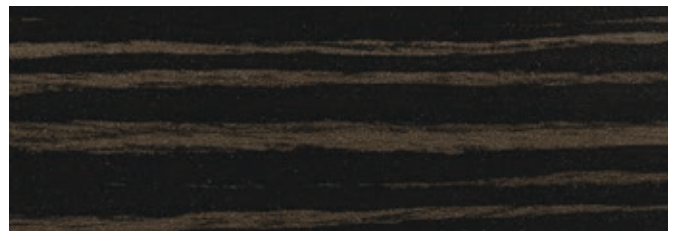
Pavement

DG



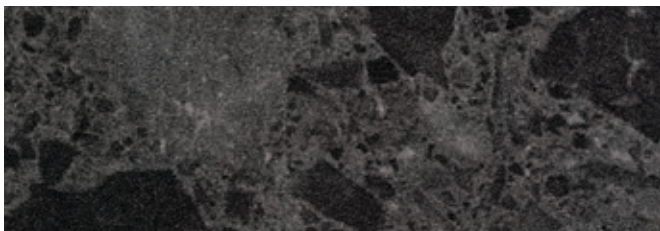
Stipple Smoke

DG



Endula Macassar

DG



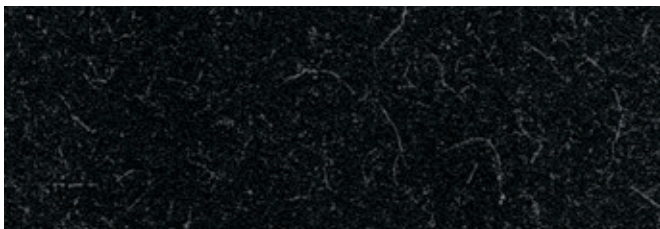
Vulcan Stone

DG



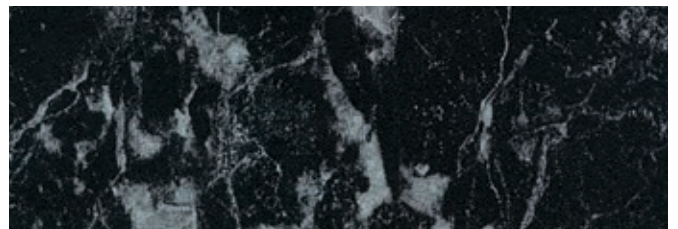
Jet Terrazzo

DG



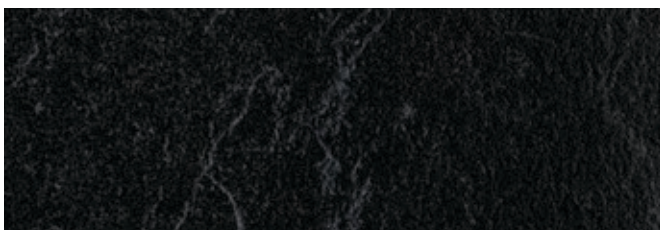
Starlight

DG



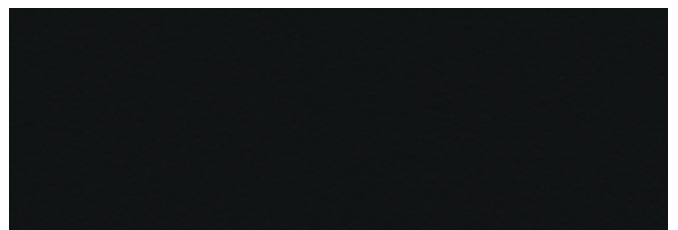
Black Marble

DG



Ebony Marble

DG



Black

DG



Style your benchtop with Formica® and Laminex® Edgetapes.

Finishing your benchtop with matching ABS edgetape gives you a beautiful square edge without compromising on the overall look.

With great depth of colour, it's sleek and provides a softer yet durable impact resistant edge, ideal for spaces where increased contact may occur.

Use ABS edgetape to create the look of stone at a fraction of the cost.

ABS Edgetape for Benchtops can be specified by colour and in some cases finish.

Formica and Laminex ABS edgetape is available in 53mm width and 1mm thickness. These can be supplied as either unglued or pre-glued.

Features & Benefits

- Thickness of 1mm disguises the edge, creating a seamless pattern and colour representing the appearance of stone
- Matches the colour of the laminate
- Easy to apply post pressing
- Recyclable
- Non-toxic

EDGETAPE

FOR BENCHTOPS

VISIT US

laminex.co.nz

CALL US

0800 303 606

SAMPLES

quickchip.co.nz
or 0800 999 939

The colours of the photographs and swatches depicted in this brochure are as close as modern photographic, lighting and printing processes allow. The colour/finish combinations shown are available at the time of publication, but are subject to availability and may be withdrawn at any time. Formica[®] and Laminex[®] is no different from any other material in that darker colours and gloss finishes will always show scratches and superficial wear and tear more readily than lighter colours or lower gloss finishes. Such surfaces require more care and maintenance and Laminex New Zealand[®] recommends the use of laminate cleaning products (or mild household cleaning products). Please visit our website laminex.co.nz, for specific care and cleaning information. Note that in certain lights or from different angles wipe down marks may be visible after cleaning. Formica[®] 180fx[®], ARtouch[®] and Laminex[®] DiamondGloss[®] should be protected from strong direct sunlight as continuous exposure may cause discolouration or fading to the surface over time. Please obtain a copy of the terms and conditions of the Formica[®] or Laminex[®] 7 Year Limited Warranty by visiting laminex.co.nz. This warranty is in addition to any rights that may exist under the Consumer Guarantees Act (1993). J006512 07/18

© Copyright Reserved 2018, Laminex New Zealand[®]. Formica[®] is marketed and distributed by Laminex New Zealand[®], a division of Fletcher Building Products Limited. Formica[®] 180fx[®], ARtouch[®], Laminex[®] DiamondGloss[®] and Laminex New Zealand[®] are registered trademarks of Laminex New Zealand[®] or its related company licensors.

Laminex[™]
NEW ZEALAND